






CONSTRUCTION UPDATE NOVEMBER 2018

CONSTRUCTION UPDATE

Works at Yeerongpilly Green have progressed ahead of schedule.

The reinstatement of access between Ortive and Paragon Streets to King Arthur Terrace and Fairfield Road has been brought forward and is now targeted to open mid/late December 2018.

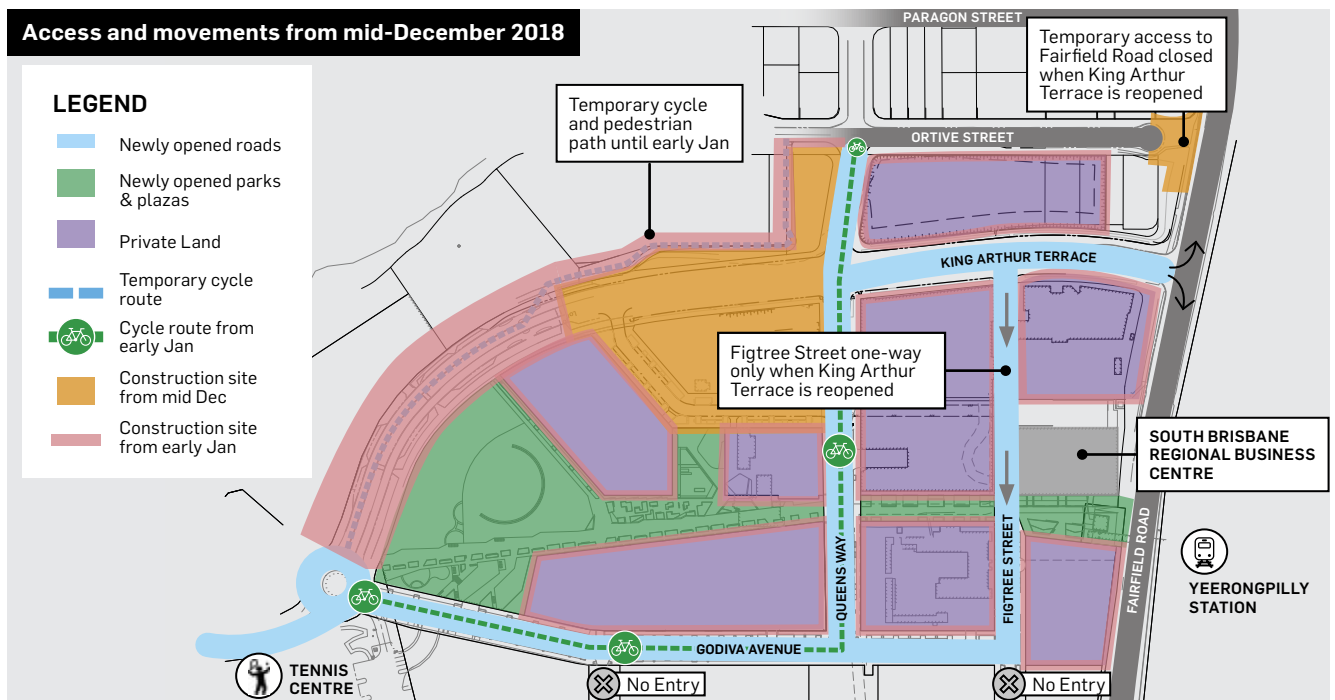
MAJOR ACTIONS – COMPLETED THIS MONTH

-  Pavement works including verges have been completed on Fairfield Road in preparation for the reopening of the Fairfield Road/King Arthur Terrace intersection.
-  Roadworks to widen the southern side of Ortive Street have been completed.
-  Pavement works to the eastern section of King Arthur Terrace have been completed.

MAJOR ACTIONS – FOR THE COMING MONTH

-  Access for residents of Ortive and Paragon Streets to the intersection of King Arthur Terrace and Fairfield Road is planned for mid/late December 2018.
-  This will coincide with the closing of the temporary access of Ortive Street with Fairfield Road.
-  Pavement works on Fig Tree Street and Queens Way will be completed in December to allow through-traffic access to the Fairfield Road/King Arthur Terrace intersection.
-  The footpath along Fairfield Road between Ortive Street and the Yeerongpilly Train Station will be reinstated.

Access and movements from mid-December 2018



PARK NAMING

We thank you for your feedback about naming the new park “Yeerongpilly Green”.

This feedback has now been provided to Brisbane City Council who will ultimately make a decision on naming the park.

We will keep you up-to-date as this process progresses.

CURRENT ROAD & CYCLE NETWORK

The existing temporary access arrangements will continue to remain in place until access from King Arthur Terrace to Fairfield Road is re-opened in mid/ late December 2018. Maps illustrating the new access arrangement will be provided upon the opening of this new route next month.

FIG 02: DIVERSIONS TO THE EAST FOLLOWING A CLOSURE OF A SECTION OF KING ARTHUR TERRACE

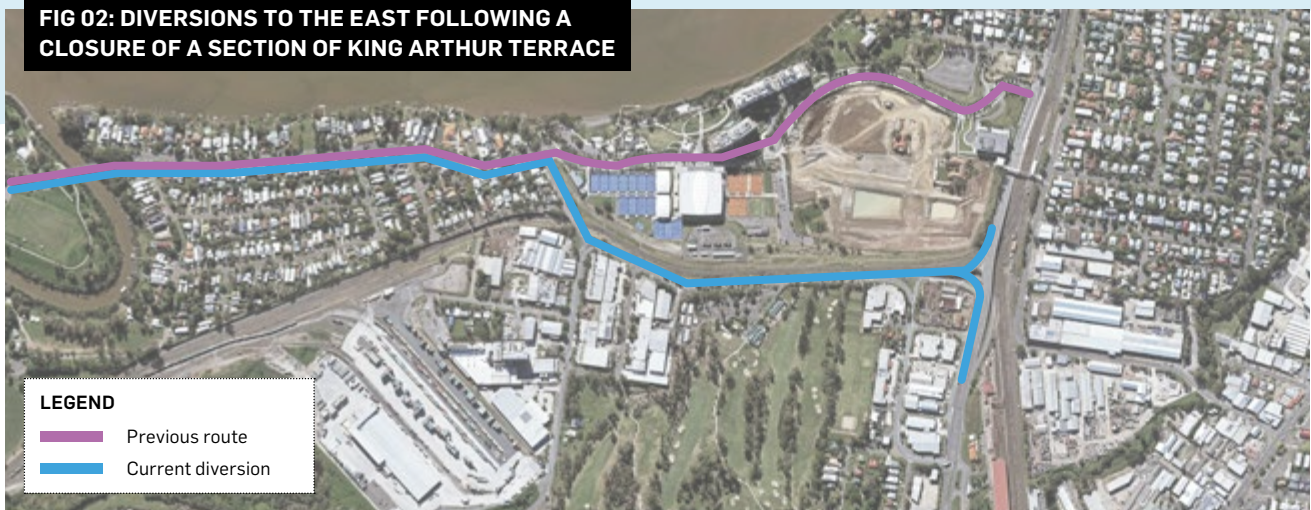


FIG 03: DIVERSIONS TO THE SOUTH FOLLOWING A CLOSURE OF A SECTION OF KING ARTHUR TERRACE



FIG 04: DIVERSIONS TO THE NORTH FOLLOWING A CLOSURE OF A SECTION OF KING ARTHUR TERRACE



MORE INFORMATION

For further information or to ask any questions, please contact the project team.

T: 1800 776 682

E: yeerongpillygreen@urbis.com.au

This information is also available on the project website at

www.yeerongpillygreen.com.au/site-news

